

I'm going to the theatre. What to expect?

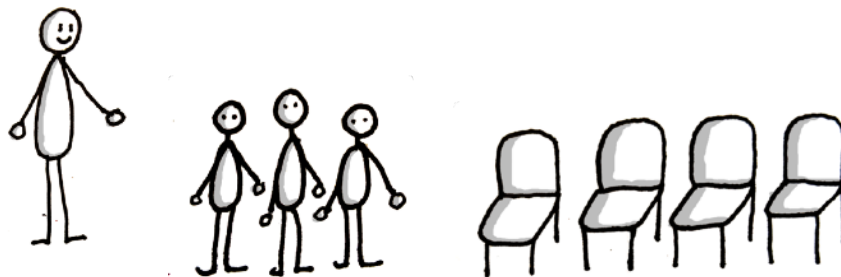
1. I go to the theatre



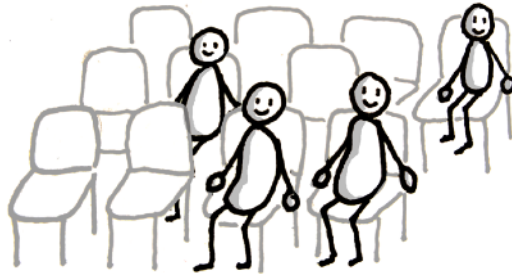
2. I wait in the lobby, I can enter the theatre as soon as the doors open.



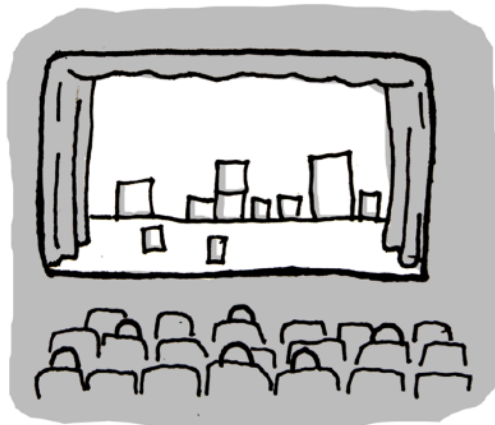
3. When I enter the theatre, someone shows me where to sit.



4. I sit and wait for the show to start. The show might start about 10 minutes later than expected if people haven't finished taking their seats.



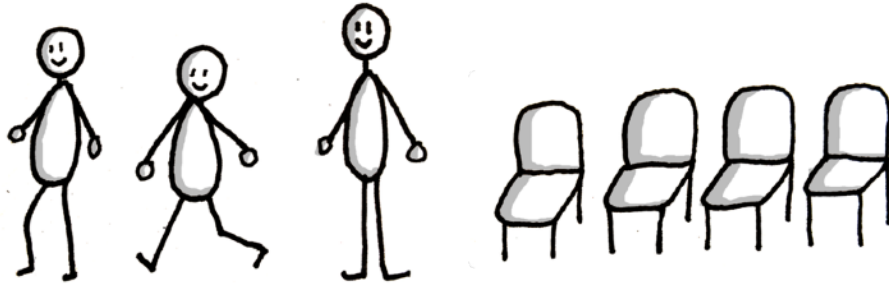
5. The lights in the room go out. The stage lights come on. The show begins.



6. I watch the show for about 55 minutes.



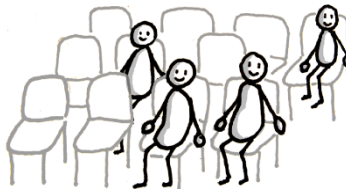
7. The room lights come back on. The show is over. I can leave the room with the person accompanying me.



The times when there will be the most noise:



In the lobby before and after the show



In the theatre before the show (about 15 minutes)



At the end of the show when the audience applauds

If I don't feel well during the show, I can go out into the hall with the person accompanying me. The hall is quiet during the show.

